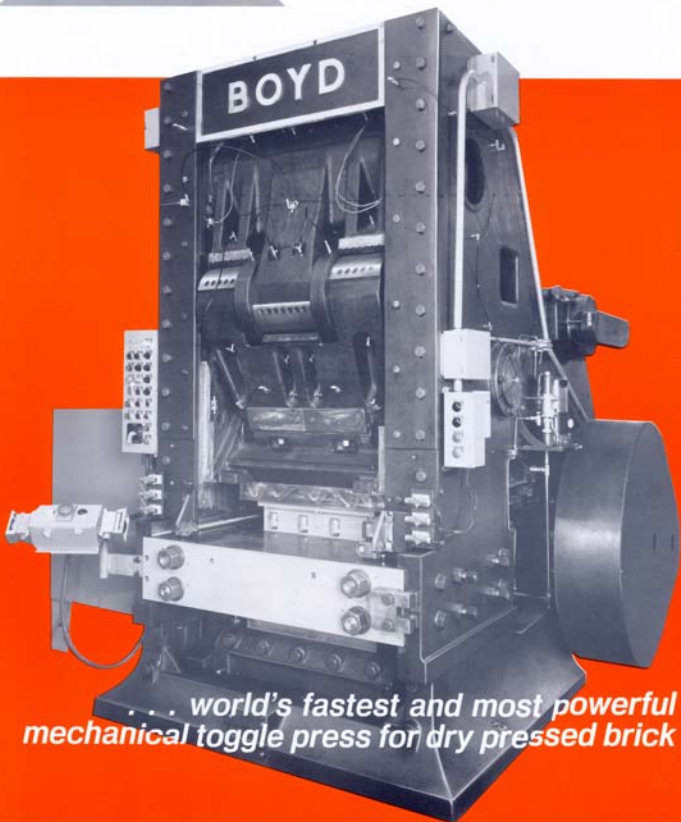


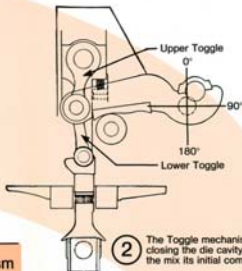
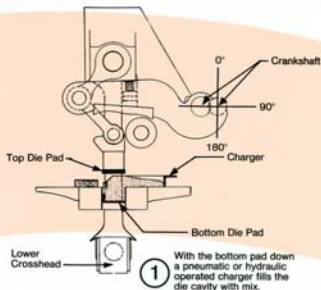
BOYD
POWER PRESS

Mechanical Toggle Presses



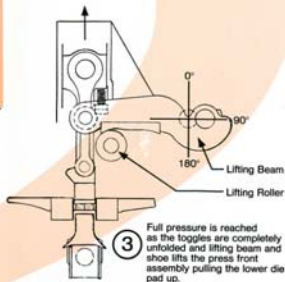
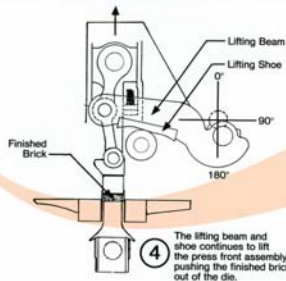
*world's fastest and most powerful
mechanical toggle press for dry pressed brick*

BOYD'S Unique Pressing Action Results in Quality Brick with High Production Efficiency



Heavy-duty rigid side members link the toggle mechanism to the lower crosshead creating a fixed press shut height so that green brick dimensional stability is controlled. Green brick density variation is also controlled, without sacrificing productivity, as a result of Boyd's unique pressing action. The key is equalized top and bottom pressing pressures.

Top and bottom pressing action is achieved as a result of the toggles unfolding (top pressing) while the lifting beam and shoe lifts the bottom pad (bottom pressing) since the lower crosshead is linked to the toggle mechanism.





Built for High Productivity and Durability

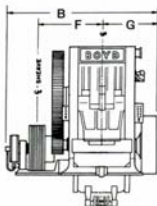
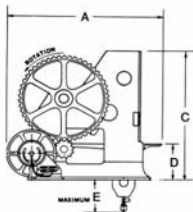
Specifications

	Model X	Model Y	Model Y Special	Model Y Max
Maximum Operating Tonnage	400 U.S. Tons (3,557 KN)	800 U.S. Tons (7,114 KN)	1000 U.S. Tons (8,892 KN)	1200 U.S. Tons (10,671 KN)
Maximum Nominal Strokes Per Minute	up to 8	up to 8	up to 8	up to 8
Mold Box Cavity (maximum outside dimensions of mold equipment that can be secured in press)	29¾" (756 mm) x 16" (406 mm) x 9" deep (229 mm)	36¼" (921 mm) x 20¾" (527 mm) x 12" deep (229 mm)	36¼" (921 mm) x 20¾" (527 mm) x 12" deep (229 mm)	36¼" (921 mm) x 20¾" (527 mm) x 12" deep (229 mm)
Maximum Depth-of-Fill	8" (203 mm)	11" (279 mm)	11" (279 mm)	11" (279 mm)
Horsepower Required	35 (26 kw)	75 (56 kw)	75 (56 kw)	150 (112 kw)
Approximate Press Weight	38,000 lbs 17,235 kg	77,000 lbs 34,930 kg	80,000 lbs 36,290 kg	80,000 lbs 36,290 kg

Standard Press Features include all OSHA safety controls and state of the art programmable limit switch, automatic oil lubrication system, motorized depth of fill, multiple deairing pauses, air operated clutch and brake as well as all controls for inch, single stroke and continuous operation.

Dimensions

	Model X	Model Y Model Y-Special	Model Y Max
A	9'6" (2896 mm)	12'0" (3658 mm)	12'3" (3734 mm)
B	9'11½" (3035 mm)	11'10" (3607 mm)	12'2" (3708 mm)
C	8'10" (2692 mm)	10'7¼" (3232 mm)	10'7¼" (3232 mm)
D	2'10½" (876 mm)	2'11¼" (895 mm)	2'11¼" (895 mm)
E	4'½" (1232 mm)	4'½" (1232 mm)	4'½" (1232 mm)
F	4'1¾" (1264 mm)	5'½" (1537 mm)	5'½" (1537 mm)
G	3'4" (1016 mm)	4'2½" (1283 mm)	4'1¼" (1251 mm)





A Standard In Power Presses



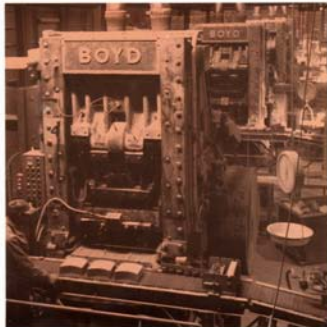
Boyd presses are in operation today throughout the world. Anywhere there is a need for highly reliable and very productive brick making equipment. The simplicity of the mechanical toggle press design means that press operation is easily learned. Large load bearing surfaces, strong, rigid members and the advantages of replaceable wearing parts greatly enhances the utility and efficiency of the Boyd press. In addition, easy to operate press controls and a wide assortment of press accessories makes the Boyd press a logical choice for pressing even the most demanding of today's mixes.

Contact Chisholm, Boyd and White Company for more information and learn how Boyd can enhance the productivity of your pressing operations.

Built for High Productivity & Durability

Accessories Available:

- Pressing tonnage monitor
- Charger mounted brick picker
- Die heaters
- Mold spray system
- Charger insert/agitator
- Mix blender and hopper
- Hydraulic or air charging
- Roller guided charger
- Split taperlock gear bushings
- Quick change mold box
- Lifting shoes for special brick sizes



CHISHOLM, BOYD & WHITE COMPANY

A Venturedyne Company

4101 WEST 126TH STREET ALSIP, ILLINOIS 60658 PHONE 708/597-7550 FAX 708/597-0313

PRINTED IN U.S.A.